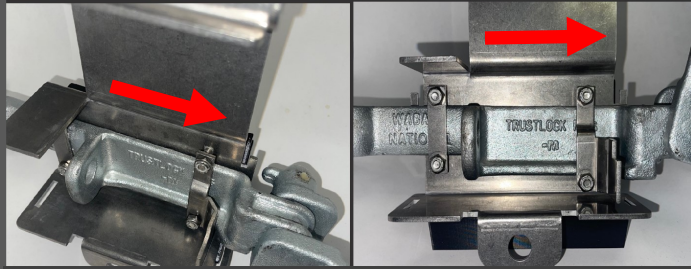


SEAL SAFE® Washbasin Trust Lock Edition

STEP 1: Mount Seal Safe in "Open Position" to Hasp Handle. Slide Seal Safe to the Right, then tighten with 7/16" socket



SLIDE SEAL SAFE TO RIGHT SIDE ON HANDLE BEFORE TIGHTENING

STEP 2: Seal Safe is designed to move with Handle. To access trailer seal, lift seal safe cover upwards before pivoting open.



STEP 3: Add Padlock with 7/16" shackle to properly protect seal. Padlocks sold separately on www.freightdefense.com



STEP 4: IMPORTANT: Seal Safe must be in "Closed Position" before securing trailer door to sidewall to avoid interference.