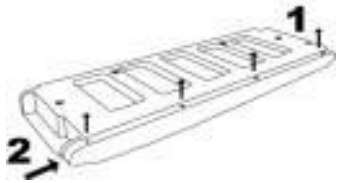


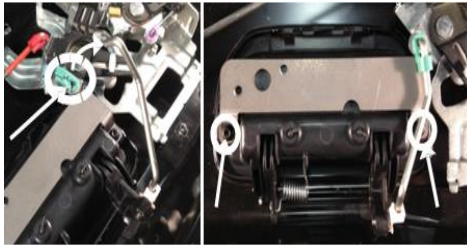
# POWER TAILGATE LOCK INSTRUCTIONS

**Package Contents:** Lock Bezel, 2 keys, Mounting Bracket, Locking Bolt Linkage, Crank Linkage, 2 Screws #8-32 x 1 1/2", 1 Bolt 1/4" x 2" Locking Bolt Linkage and Slide Bolt Long and Short Wire Harness, Zip Ties

**Tools Required:** 10 MM Socket, T40 Torx Bit, Phillip Head 5/32" Allen Wrench Rubber Mallet Power Drill 3/16" (or 5MM), 1/2" (or 12MM) Drill Bits



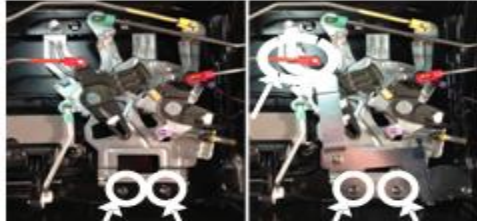
**STEP 1** - Lower the tailgate. Remove the four Phillips head screws from the top trim, slide the trim to the right (passenger) side using a rubber mallet and lift to remove it. Apply downward pressure on the top trim if it bows up. Remove the white clips that remain on the tailgate by turning them 45 degrees to pull out. NOTE THE ORIENTATION BEFORE REMOVAL. Remove the T40 torx screws holding the interior trim panel and lift it off.



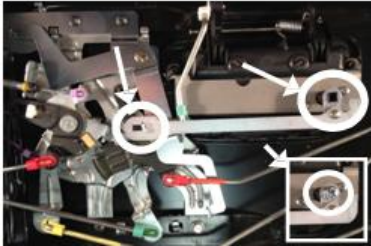
**STEP 2** - Remove the handle rod from mechanicals by turning the green rod clip and pulling the rod out of the clip. Swing the rod up and out of the way. Remove the two screws holding the factory handle in place; there are tabs that will hold the handle from falling out of the tailgate, but for extra assurance hold the handle in place so not let the handle to fall. Install the mounting bracket over the back side of the handle and reinstall the two screws and tighten. You may need to file the washer down to get the bolt to fit. Reinstall the handle rod. The handle should now look like picture.



**STEP 3** - Using the bracket holes as a template drill the two 3/16" (or 5MM) holes and one 1/2" (or 12MM) hole. Insert the lock assembly from the front of the bezel inserting the shaft through the 1/2" hole and aligning the two mounting holes on the bezel with the mounting bracket. Insert the 2 supplied 8-32 x 1 1/2" screws through the mounting bracket in the bezel. Tighten the screws. DO NOT OVER TIGHTEN. IF LOCK ASSEMBLY BINDS LOOSEN SCREWS UNTIL THE KEY MOVES FREELY!



**STEP 4** - Remove the two mechanical assembly screws. Mount the POP N LOCK bolt linkage under the upper latch rod as shown using the existing two mechanical assembly screws. The lock assembly should look like picture.

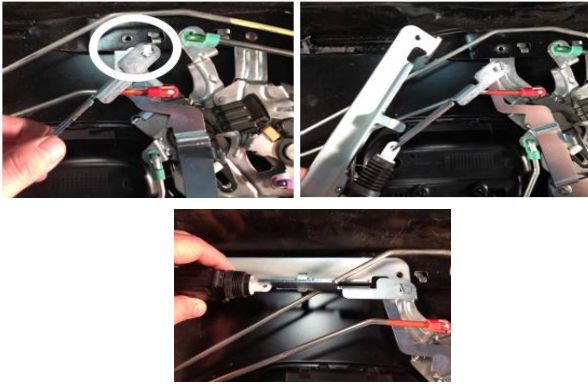


**STEP 5** - Install the crank rod assembly by holding the slotted end onto the bolt linkage and the square hole to the end of the lock assembly shaft. Insert the 1/4" x 20 x 2" screw into the shaft and tighten.

**STEP 6** - Check the functioning of the lock.

**Lock** - Turn the key to the right (passenger side) to the two o'clock position and then back to 12 o'clock to lock.

**Unlock** - Turning the key to the left (driver side) to the ten o'clock position and then back to 12 o'clock to unlock.



**STEP 7** – Remove the driver side lower mechanical assembly screw. Hook the end of the slide bolt onto the t-post of the lock bolt linkage and turn to position shown in the picture to the upper left. Hook the white plastic hook of the actuator onto the slide bolt and rock the actuator into place making sure the bolt end goes under and the slide bolt goes above the latch rod as shown in the picture to the upper right and lower center. Reinstall the driver side lower mechanical assembly screw and tighten. Gently slide the slide bolt to the lock and unlock position to verify function of lock.

**STEP 8** – Wiring (there are other ways to run the wiring this is one way) – Snake the short wiring cable up the tailgate through the driver side drain hole and connect it to the bullet connectors of the power unit. Secure with cable ties to prevent the wire from getting pinched or in the way of the latch rods. Connect the other end to the long wiring cable. Locate this connector under the truck so that it is accessible for tailgate removal. Run the long wiring cable along the factory wire harness to the engine compartment securing it with cable ties. Snake it into the driver's compartment using the rubber grommet in the firewall that the factory wire harness run through from the fuse box. Remove the driver side kick panel and run the wire down into the driver side kick panel. The lock and unlock wires are located in the fuse box under the kick panel. The yellow with a black stripe (lock) and the yellow with a green stripe (unlock) wires are in the small green plug that is located at the bottom front side of the fuse box. Use the two wire taps to connect to these two wires. Test the operation of the lock (if the tailgate lock works in the opposite direction as the door locks disconnect the bullet connectors off the actuator and switch the wires that they were plugged into). Secure all the wiring and replace the kick panel.

**STEP 9** – Replace the interior trim panel of the tailgate using the torx screws removed in Step 1. Replace the white top trim clips onto the tailgate, making sure they are oriented as noted in Step 1. Carefully locate the top trim over the clips and press it firmly into place. You will hear and feel them snap into place. Adjust the position of the top rim once again using a rubber mallet. Reinstall the four Phillips Head screws.

## LIMITED WARRANTY TERMS AND CONDITIONS

- (1) **Installation.** Pop & Lock™, LLC (and Pop & Lock™ Corporation) is not responsible for installing the Pop & Lock™ or for the harm suffered by any person as a result installing it.
- (2) **Warranties.**
- Customer acknowledges that it is unreasonable to believe that any device whatever will prevent a theft in the case of every attempt and that the most that can be expected from a so-called anti-theft or security device is that it will deter many thieves.
  - POP & LOCK™ LLC. (and Pop & Lock™ Corporation) MAKES, AND CUSTOMER RECEIVES, NO WARRANTY, EXPRESSED OR IMPLIED, EXCEPT THE WARRANTIES OF TITLE TO THE POP & LOCK™ AND THEIR MERCHANTABILITY, PARTICULARLY NO WARRANTY OF FITNESS FOR A PARTICULAR USE OR PURPOSE OR AGAINST INFRINGEMENT.**
  - As Customer's only remedy, Pop & Lock™, LLC (and Pop & Lock™ Corporation) will repair or replace, at its option and without charge, any lock that is defective in material or workmanship when received by Customer and is returned to Pop & Lock™ LLC (and Pop & Lock™ Corporation), FOB Pop & Lock™ Corporation's offices, within one (1) year after it's receipt by the Customer. Pop & Lock LLC will ship all replacement, or repaired, Locks to Customer, FOB Pop & Lock™'s shipping point.
  - Factory support is only available for Pop & Lock™ products purchased as **new** through an Authorized Pop & Lock™ dealer.

**Please Note: Pop & Lock™ Products purchased on auction sites such as Amazon, Ebay and Craigslist, to name a few, will not be covered under factory warranty under any circumstance. Pop & Lock™, LLC (and Pop & Lock™ Corporation) is unable to verify whether products sold through Auction Sites are new, used, or refurbished, and as such, Pop & Lock, LLC (and Pop & Lock™ Corporation) is unable to warranty such purchases. Pop & Lock, LLC advises using extreme caution when buying through auction sites as you'll be doing so at your own risk.**

- (3) **No Liability.** Pop & Lock™ Corporation is not liable for any loss or damage claimed by Customer or any third person to have been suffered or incurred as a result or, or related to, the Locks purchased under this Agreement, regardless of the circumstances or form of action, except any bodily injury or death for which Pop & Lock™ is liable under products-liability law. Without limiting the generality of the foregoing, in no event will Pop & Lock™ LLC be liable to Customer for any indirect, special, or consequential damages, regardless of the circumstances or the cause of action, particularly not for the value of a vehicle, or any other money damages in the event that a tailgate is stolen either notwithstanding the use of a Pop & Lock™ or when it has been returned for repair or replacement.

## END OF TERMS AND CONDITIONS

**POP & LOCK LLC 1271 CONTRACT DRIVE GREEN BAY, WI USA 54304**

*Additional Install Instructions and answers to technical questions can be found on our website at [www.popandlock.net](http://www.popandlock.net) or by calling*

**Technical Support 1-800-342-5911 option 1**

**Monday – Friday 8:30am to 4:30pm CST**

---

**Pop and Lock's limited warranty expires one (1) year after date of purchase.**

*Proof of purchase is required for warranty claims. Please submit a scanned copy or electronic image/photo of your receipt through any of the following methods:*

- E-mail: [technicalsupport@popandlock.net](mailto:technicalsupport@popandlock.net)
- Fax: 855-491-5911
- Mail: 1271 Contract Ave, Green Bay, Wisconsin (USA) 54304

*Please be sure to include:*

- Name, address and phone number
- Model and year of truck
- Model/Part number of the lock
- Brief description of the problem

