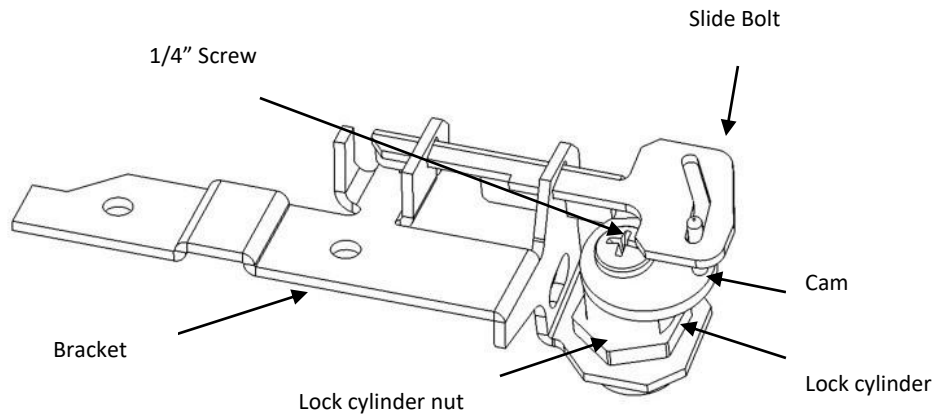


Parts Included:

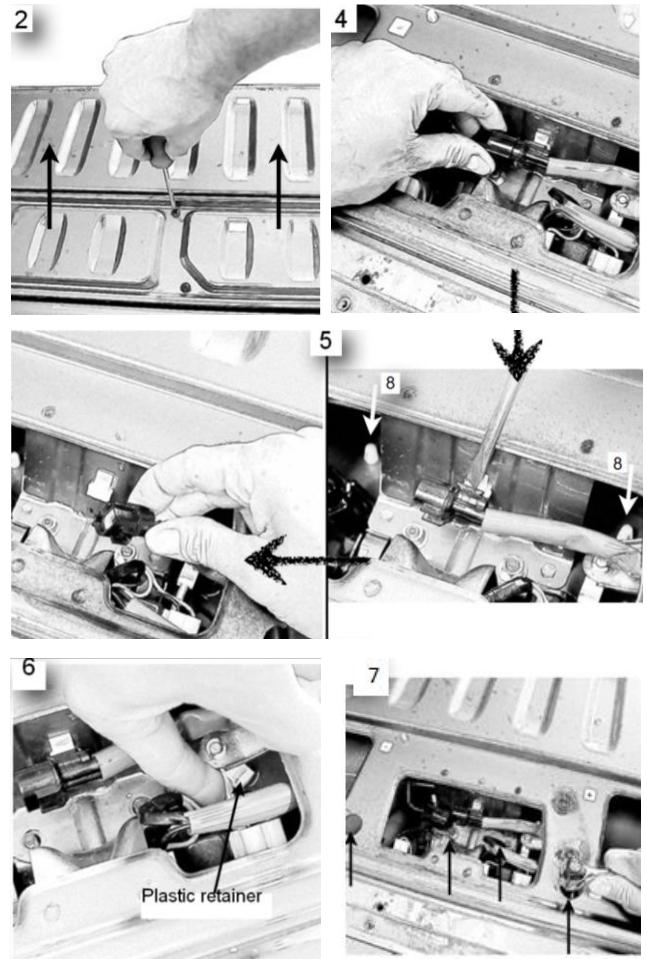
Lock assembly which includes: Bracket, Slide Bolt, Cam
Lock cylinder
Lock cylinder nut
1/4" screw
2 keys

Tools Required:

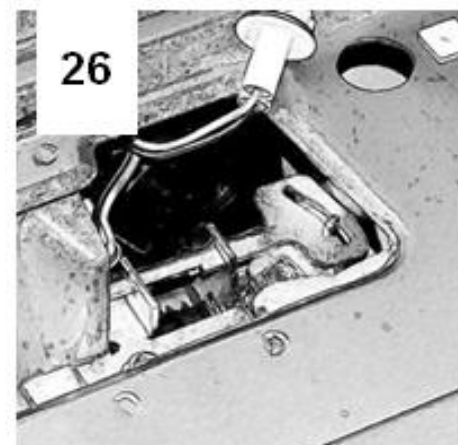
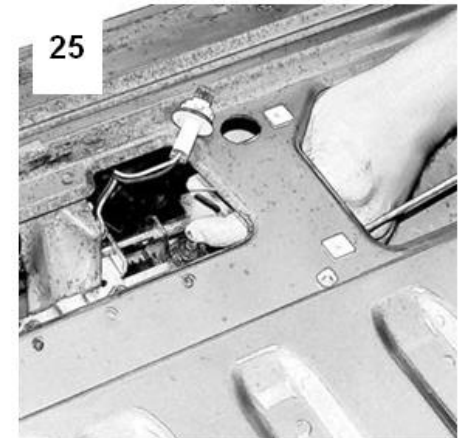
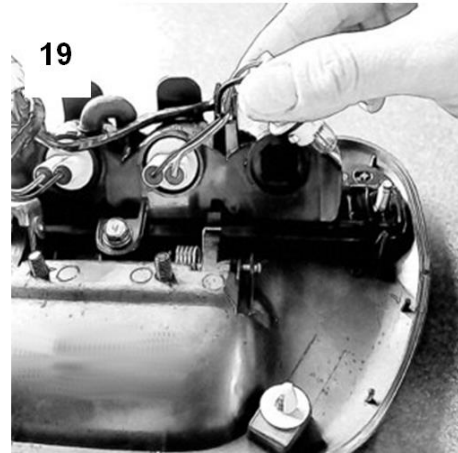
Screwdrivers – Phillips and flat
Ratchet and extension
10 MM Socket
Power drill, 3/16" drill bit and 3/4" spade bit
Needle nose pliers



1. Open the tailgate and if applicable, remove the tailgate bedliner.
2. Using a Phillips screwdriver, remove the 12 screws holding the access panel. – **See Picture 2** –
3. Remove the access panel and set aside.
4. Disconnect the light cluster connector by squeezing the connector and pulling. – **See Picture 4** –
5. Remove the other connector attached to the inside brace of the tailgate by using a flat head screwdriver and gently prying it out of the plastic clip. – **See Picture 5** –
6. Unsnap and disengage the connecting rod from the plastic retainer. – **See Picture 6** –
7. Using a ratchet and 10 mm socket, remove all 4 M 6 nuts holding the plastic bezel. – **See Picture 7** –
8. Using a pair of needle nose pliers or similar, pinch the plastic clips to release while pushing against them to unclip. – **See Items 8 in Picture 5** –
9. Using one hand, push on the handle assembly, from the inside of the tailgate. Using the other hand, pull on the bezel from the outside of the tailgate until it releases completely.
10. Place the handle assembly on a suitable work surface being careful not to damage the exterior finish.
11. Remove the light cluster from the OEM handle.



12. In reverse order reinstall the light cluster onto the Pop and Lock handle assembly.
13. Insert the Pop and Lock handle assembly back into the tailgate. First push the top of the handle assembly in the opening of the tailgate so that the plastic fingers catch the inside of the tailgate. Pass the light cluster cable into the opening and lift the connecting rod up in order to clear all of the tailgate internal metal components. Then push the bottom of the plastic handle assembly into the hole of the tailgate and push firmly until you hear audible “snaps”.
14. Re-attach the connecting rod to the plastic retainer
15. Insert the Pop & Lock Bracket into the tailgate by firstly guiding it at an angle so that the large hole flap is slipped under the internal tailgate brace. Then position over the two threaded studs of the tailgate. – See **Picture 19** –
16. Thread by hand the 4 M6 nuts, but do not tighten.
17. Lift the tailgate into the closed or up position. Insert the lock cylinder in the 3/4” hole through the handle assembly from the outside of the tailgate. Make sure that the lock number is visible either on the right side or bottom of the lock. – See **Picture 21** –
18. Using the supplied lock nut, thread by hand over the threads of the lock cylinder, from the inside of the tailgate. Use a 7/8” socket and ratchet to tighten the nut. Please make sure not to over tighten to prevent stripping the threads of the nut.
19. Tighten the 4M6 nuts using the ratchet and 10 mm socket. Once again, do not over tighten.
20. Using the key supplied, insert in the lock cylinder and turn the key to the left, or in the unlock position and remove.
21. Insert the Slide Bolt through the two slots of the Bracket. – See **Picture 25** –
22. Place the Cam inside the assembly by first slipping the Pin into the slot of the Slide Bolt. Now position the square hole of the Cam onto the square drive of the lock cylinder. – See **picture 26** –
23. Insert and tighten the 1/4" screw into the lock cylinder using a Philips screwdriver. Please hold the Cam firmly to support it during tightening of the screw preventing damage to the lock cylinder.
24. Using the key, test the lock system to ensure proper function.
25. Re-attach the light cluster connector into the plastic clip inside the tailgate.
26. Connect the other connector to the light cluster connector.
27. Replace the access panel and 12 screws.
28. Replace the bedliner if applicable.



LIMITED WARRANTY TERMS AND CONDITIONS

- (1) **Installation.** Pop & Lock™, LLC (and Pop & Lock™ Corporation) is not responsible for installing the Pop & Lock™ or for the harm suffered by any person as a result installing it.
- (2) **Warranties.**
- Customer acknowledges that it is unreasonable to believe that any device whatever will prevent a theft in the case of every attempt and that the most that can be expected from a so-called anti-theft or security device is that it will deter many thieves.
 - POP & LOCK™ LLC. (and Pop & Lock™ Corporation) MAKES, AND CUSTOMER RECEIVES, NO WARRANTY, EXPRESSED OR IMPLIED, EXCEPT THE WARRANTIES OF TITLE TO THE POP & LOCK™ AND THEIR MERCHANTABILITY, PARTICULARLY NO WARRANTY OF FITNESS FOR A PARTICULAR USE OR PURPOSE OR AGAINST INFRINGEMENT.**
 - As Customer's only remedy, Pop & Lock™, LLC (and Pop & Lock™ Corporation) will repair or replace, at its option and without charge, any lock that is defective in material or workmanship when received by Customer and is returned to Pop & Lock™ LLC (and Pop & Lock™ Corporation), FOB Pop & Lock™ Corporation's offices, within one (1) year after it's receipt by the Customer. Pop & Lock LLC will ship all replacement, or repaired, Locks to Customer, FOB Pop & Lock™'s shipping point.
 - Factory support is only available for Pop & Lock™ products purchased as **new** through an Authorized Pop & Lock™ dealer.
Please Note: Pop & Lock™ Products purchased on auctions sites such as Craigslist etc. will not be covered under factory warranty. Products purchased from an authorized dealer as "new" on websites such as Amazon and Ebay must follow their website warranty policy, process and procedures. Pop & Lock™ Products sold as "used", "refurbished", "open box" etc., cannot be verified by Pop & Lock™, LLC (and Pop & Lock™ Corporation), and as such, Pop & Lock, LLC (and Pop & Lock™ Corporation) is unable to warranty such purchases. Pop & Lock, LLC advises using extreme caution when buying through auction sites as you'll be doing so at your own risk.

- (2) **No Liability.** Pop & Lock™ Corporation is not liable for any loss or damage claimed by Customer or any third person to have been suffered or incurred as a result or, or related to, the Locks purchased under this Agreement, regardless of the circumstances or form of action, except any bodily injury or death for which Pop & Lock™ is liable under products-liability law. Without limiting the generality of the foregoing, in no event will Pop & Lock™ LLC be liable to Customer for any indirect, special, or consequential damages, regardless of the circumstances or the cause of action, particularly not for the value of a vehicle, or any other money damages in the event that a tailgate is stolen either notwithstanding the use of a Pop & Lock™ or when it has been returned for repair or replacement.

END OF TERMS AND CONDITIONS

POP & LOCK LLC 1271 CONTRACT DRIVE GREEN BAY, WI USA 54304

Additional Install Instructions and answers to technical questions can be found on our website at www.popandlock.net or by calling

**Technical Support 1-800-342-5911 option 1
Monday – Friday 8:30am to 4:30pm CST**

Pop and Lock's limited warranty expires one (1) year after date of purchase.

Proof of purchase is required for warranty claims. Please submit a scanned copy or electronic image/photo of your receipt through any of the following methods:

- E-mail: technicalsupport@popandlock.net
- Fax: 855-491-5911
- Mail: 1271 Contract Ave, Green Bay, Wisconsin (USA) 54304

Please be sure to include:

- Name, address and phone number
- Model and year of truck
- Model/Part number of the lock
- Brief description of the problem

