



## INSTALLATION INSTRUCTIONS

**Model PL3300**  
**1994-2001 Dodge Ram 1500**  
**1994-2002 Dodge Ram 2500/3500**

**Contents:**

Lock Assembly, 2 keys  
10-24 One-Way Screw  
10-24 Hex Bolt Rectangular  
Washer Instructions,  
Warranty Card

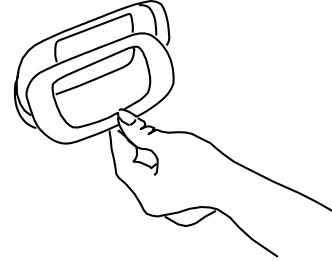
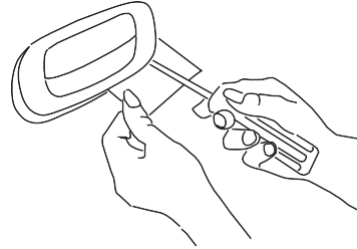
**Tools Required:**

# 30 Torx Driver  
Small Screw Driver  
Adjustable Wrench

**Tech Support:**

Call 1-800-342-5911

For the latest instructions please visit  
[www.popandlock.net](http://www.popandlock.net)

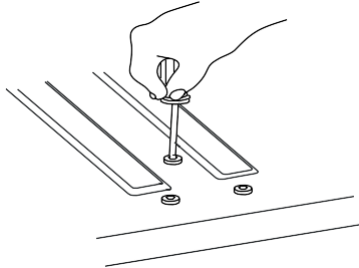


NOTE: POP&LOCK is designed to secure the passenger side latch. You may experience that the drive side latch can open due to the flex in the handle, but the tailgate will still remain locked.

**1.**

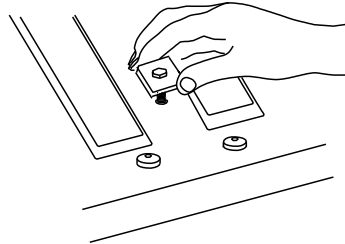
Using a scrap piece of cloth to protect the tailgate, carefully pry out the plastic insert with a small screw driver. The insert is retained by four 1/4 inch wide latches located underneath the upper and lower edges, approx. 1 inch away from the corners. The upper ones are fixed, but the lower ones flex. Insert the screw driver approx. 1 inch inside one of the lower corners to push the latch in and pry up until that corner lifts up, then do the other side. Now you can pull the insert away from the upper edge.

NOTE: Don't worry if one of the latches breaks off since the POP&LOCK will retain the insert securely.



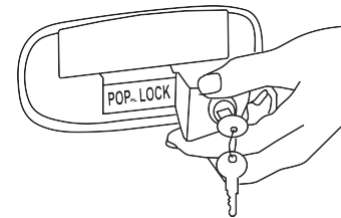
**2.**

Lower the tailgate and remove the lower of the three bolts and loosen the other two.



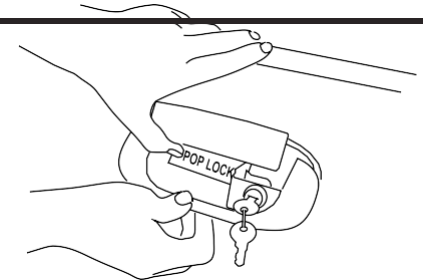
**3.**

Insert the 10-24 hex head screw and rectangular washer in place of the bolt you just removed.



**4.**

Raise the tailgate, lift the handle, insert the POP&LOCK and capture it with one or two turns of the 10-24 screw.



**5.**

Lift the handle again and slide the plastic insert under the POP&LOCK until it snaps into place.

## LIMITED WARRANTY TERMS AND CONDITIONS

- (1) **Installation.** Pop & Lock™, LLC (and Pop & Lock™ Corporation) is not responsible for installing the Pop & Lock™ or for the harm suffered by any person as a result installing it.
- (2) **Warranties.**
- Customer acknowledges that it is unreasonable to believe that any device whatever will prevent a theft in the case of every attempt and that the most that can be expected from a so-called anti-theft or security device is that it will deter many thieves.
  - POP & LOCK™ LLC. (and Pop & Lock™ Corporation) MAKES, AND CUSTOMER RECEIVES, NO WARRANTY, EXPRESSED OR IMPLIED, EXCEPT THE WARRANTIES OF TITLE TO THE POP & LOCK™ AND THEIR MERCHANTABILITY, PARTICULARLY NO WARRANTY OF FITNESS FOR A PARTICULAR USE OR PURPOSE OR AGAINST INFRINGEMENT.**
  - As Customer's only remedy, Pop & Lock™, LLC (and Pop & Lock™ Corporation) will repair or replace, at its option and without charge, any lock that is defective in material or workmanship when received by Customer and is returned to Pop & Lock™ LLC (and Pop & Lock™ Corporation), FOB Pop & Lock™ Corporation's offices, within one (1) year after it's receipt by the Customer. Pop & Lock LLC will ship all replacement, or repaired, Locks to Customer, FOB Pop & Lock™'s shipping point.
  - Factory support is only available for Pop & Lock™ products purchased as **new** through an Authorized Pop & Lock™ dealer.  
***Please Note: Pop & Lock™ Products purchased on auctions sites such as Craigslist etc. will not be covered under factory warranty. Products purchased from an authorized dealer as "new" on websites such as Amazon and Ebay must follow their website warranty policy, process and procedures. Pop & Lock™ Products sold as "used", "refurbished", "open box" etc., cannot be verified by Pop & Lock™, LLC (and Pop & Lock™ Corporation), and as such, Pop & Lock, LLC (and Pop & Lock™ Corporation) is unable to warranty such purchases. Pop & Lock, LLC advises using extreme caution when buying through auction sites as you'll be doing so at your own risk.***
- (3) **No Liability.** Pop & Lock™ Corporation is not liable for any loss or damage claimed by Customer or any third person to have been suffered or incurred as a result or, or related to, the Locks purchased under this Agreement, regardless of the circumstances or form of action, except any bodily injury or death for which Pop & Lock™ is liable under products-liability law. Without limiting the generality of the foregoing, in no event will Pop & Lock™ LLC be liable to Customer for any indirect, special, or consequential damages, regardless of the circumstances or the cause of action, particularly not for the value of a vehicle, or any other money damages in the event that a tailgate is stolen either notwithstanding the use of a Pop & Lock™ or when it has been returned for repair or replacement.

## END OF TERMS AND CONDITIONS

POP & LOCK LLC, 1271 CONTRACT DRIVE, GREEN BAY, WI USA 54304

Additional Install Instructions and answers to technical questions can be found on our website at [www.popandlock.net](http://www.popandlock.net) or by calling  
**Technical Support e-mail [technicalsupport@popandlock.net](mailto:technicalsupport@popandlock.net) or call 1-800-342-5911 option 1.**  
**Monday – Friday 8:30 am to 4:30pm CST**

---

**Pop and Lock's limited warranty expires one (1) year after date of purchase.**

*Proof of purchase is required for warranty claims. Please submit a scanned copy or electronic image/photo of your receipt through any of the following methods:*

- E-mail: [technicalsupport@popandlock.net](mailto:technicalsupport@popandlock.net)
- Fax: 855-491-5911
- Mail: 1271 Contract Ave, Green Bay, Wisconsin (USA) 54304

*Please be sure to include:*

- Name, address and phone number
- Model and year of truck
- Model/Part number of the lock
- Brief description of the problem

